

A **world class** company
built on **local** values

SX



SX ENVIRONMENTAL SUPPLIES
2014 EXPORT CATALOGUE

ABOUT SX ENVIRONMENTAL SUPPLIES	3	LIVE CATCH CAGE TRAPS	47 – 51
NEW		APPLICATION EQUIPMENT	52 – 53
BaitSafe™	4 – 5	ANCILLARY + CLEANING EQUIPMENT	54 – 57
RODENT CONTROL		Cleaning equipment	54 – 55
Mouse boxes	6 – 9	Inspection cameras	56
Mouse traps and trays	10	Torches	57
Live catch mouse traps	11 – 12	UV torches	57
Contact tunnels	13	BAGS, BOXES + CABINETS	58 – 60
Mouse accessories	14 – 15	PPE	
Rat boxes	16 – 26	Gloves	61 – 62
Covert bait stations	27	Head protection	62
Rat traps and trays	28	Clothing protection	63
Rat accessories	29 – 31	Eye and ear protection	64
Odour control	32	Respiratory protection	65 – 66
Gluebooks	33	Wasp and bee protection	67
Proofing	34 – 36	INDEX	68 – 69
INSECT CONTROL		NOTES	70
Plastic insect traps	37	OTHER P+L SYSTEMS BRANDS	71
Insect pads and cardboard insect traps	38		
Cockroach and crawling insect control	39 – 40		
Bedbugs	41		
Moth traps and monitoring	42 – 43		
Wasp and fly traps	44 – 45		
Proofing	46		



SX Environmental is one of the UK's leading distributors of pest control products – We are pleased to offer this leading brand to our customers across Europe.

SX is an expert in pioneering new products in the market, offering well-known pest control brands alongside newly developed products to meet the demands of the dynamic pest control environment, including unique rodent boxes and other plastic products.

Alongside a comprehensive range of pest control products, SX is recognised for its market leading customer service and technical advice.

P+L Systems®

SX Environmental became part of the P+L Systems Group in 2012. P+L Systems delivers a range of brands to the facilities management industry, offering our global customer base a wide range of products to support their FM needs. Based in the UK, P+L Systems develops leading brands for specialist commercial markets, including flying insect control, bird control and washroom hygiene solutions.

Leading brands - Our reputation is built on leading brand heritage, developed with extensive knowledge of our markets and supported by experts in each field. Each of our brands is over 15 years old, built on a reputation of high quality products and support services. We continually work to develop our brands to support our distributors across our territories.

Leading products - Customer insight is at the heart of our product innovation programme, allowing us to develop world class products designed with serviceability, design and quality in mind. Our close working relationships with customers is key to our product development ethos, giving us insight into the needs of our customers as well as specifiers and end users. To find out more about the P+L Systems Group and our brands, please visit www.pandlsystems.com



BAITSAFE™ RODENT AND INSECT BAIT STATION

PRODUCT CODES: SXBAITSAFE30 (30 pack)
SXBAITSAFE6 (6 pack)
SXBAITSAFE1 (Single pack)

THE NEXT GENERATION BAIT STATION

How is BaitSafe™ different from traditional bait stations?

BaitSafe™ can be installed into walls, ceilings, flat roofed areas, eaves and floors, allowing pest controllers to place bait directly into areas where pests live and breed. In contrast to traditional bait stations, BaitSafe™ is not exposed to the public therefore eliminating the risk of children or pets coming into contact with poisonous bait. Thanks to the unique design, BaitSafe™ is the first product on the market to offer such a discreet solution.

How does BaitSafe™ work?

BaitSafe™ is quick and easy to install, thanks to the installation guide that is printed on the packaging. Start by drilling a 90mm diameter hole in the wall or ceiling where baiting is required, place the product into the hole and pull out the tabs to lock it into place before securing with screws. Then simply load up the bait spike with your desired bait and install into the device before locking it using the key. Once installed, pests living in the walls or ceilings have easy access to the bait without coming into contact with humans.

Simple and safe maintenance

Once installed BaitSafe™ is very easy to monitor, with service times typically around 30 seconds. Using the key pest controllers can quickly access the bait, check for evidence of pests and replenish the bait supply if needed. Unlike conventional baiting methods, no ladder is required to monitor BaitSafe™ units that are installed in ceilings, instead pest controllers can screw a standard extension or paint pole into the key to open the unit from floor level, therefore reducing service time, simplifying the maintenance process and removing 'working at height' issues.



2012
FOOD
MAGAZINE
AWARDS

BaitSafe™ offers a unique solution to the issues faced by pest controllers on a daily basis, tackling both crawling insect and rodent problems at their source.

- HACCP food safety certified for use against insects and rodents
- Strong, robust design
- Discreet design allows installation in areas which would traditionally have been unsuitable for baiting, for example front of house areas in restaurants, shops, supermarkets, retail venues, care homes and hospitals
- Allows bait to be placed into wall cavities, directly targeting the area where rodents live and breed
- Allows removal of bait after use
- Suitable for use with toxic bait or non-toxic bait to allow monitoring
- Suitable for use with insecticide gels
- Can be used with SX Oda-Blocks to prevent rodent odours in wall cavities
- Patented key system only allows access by the pest controller
- Can be used to provide instant access to wall cavities for monitoring with cameras
- Removes the need to access ceiling and loft spaces during bait placement and monitoring



- ACCESSORIES:**
- SXBAITSAFESAW (SX BaitSafe 90mm Hole Saw x 1)
 - SXBAITSAFESAWBIT (SX BaitSafe Saw Arbour 7/16 in x 1)
 - SXBAITSAFEPOLE (SX BaitSafe Pole x 1)
 - SXODAMIX (SX Oda-Blocks Mixed x 12)
 - SXODA (SX Oda-Blocks Cherry x 12)



SX MICRO MOUSE BOX**SX MICRO MOUSE BOX**

PRODUCT CODES: SXMICROMBLK (Black)
SXMICROMGR (Green)



A compact, robust mouse box capable of holding all popular bait blocks securely. The size of the unit makes it ideal for areas where space is tight, including near kitchen appliances.

- Strong polypropylene construction
- Available in black or green
- Compatible with most types of block bait
- Secure locking system
- Can be secured using the SX Fix N Go system
- Can be printed with your logo. Please call for further details.
- Includes 2 keys per 100 boxes

DIMENSIONS (MM): 95 X 55 X 30

PACK SIZE: 100

ACCESSORIES: SXFIX (SX Fix N Go pads x 10)
SXKEY (SX Key x 10)



SX EURO MOUSE BOX

PRODUCT CODES: SXMBK (Black)
 SXMWH (White)
 SXMRD (Red)
 SXMGR (Green)
 SXMBL (Blue)
 SXMCL (Clear)



Offering superb value for money, the SX Euro Mouse Box is manufactured from tough polypropylene and can be used for a wide range of applications.

- Strong polypropylene construction
- Secure locking system
- Can accommodate most popular blocks
- Can be secured with a choice of wall and floor fixings
- Can be used with the SX Insect Guard and SX Bug Tray
- Available in six colours
- Can be printed with your logo. Please call for further details.

DIMENSIONS (MM): 130 X 75 X 40

PACK SIZE: 100

ACCESSORIES:

SXFIX (SX Fix N Go pads x 10)
 SXKEY (SX Key x 10)
 SXBUGBLK (SX Bug Tray, Black x 50) Other colours available
 SXINSBK (SX Insect Guard, Black x 50) Other colours available
 SXMSHOE (SX Mouse Box Metal Shoe x 10)
 SXMBRAC (SX Mouse Box PVC Bracket x 100)

SX TRAP-E BOX

PRODUCT CODES: SXTRAPEBK (Black)
 SXTRAPEGR (Green)
 SXTRAPCLEAR (Clear)



This strong polypropylene product can be used with bait or with traps as a non-toxic solution. The station can be customised with your logo, please call for more details.

- Tough polypropylene construction
- Hinged lid
- Compatible with all types of block bait or snap trap
- Secure locking system
- Available in green, black or clear
- Unit features viewing slots, allowing technicians to see whether the trap has been activated
- Can be secured using the SX Fix N Go system

DIMENSIONS (MM): 150 X 120 X 6

PACK SIZE: 15

ACCESSORIES: SXFIX (SX Fix N Go pads x 10)
 SXKEY (SX Key x 10)
 SNAPEMSE (Snap-E Mouse Traps x 1)



TRAP-IN-A-BOX MOUSE

PRODUCT CODE: TRAPBOXM



A ready to use unit for trapping mice, pre-assembled with a Snap-E mouse trap inside. SX Trap-in-a-Box features a pull cord allowing the trap to be set from outside the box. The clear trap also allows the user to see when a rodent has been caught, reducing servicing time. This station can be customised with your logo, please call for more details.

- Hinged lid
- Locked, secured bait station using the SX One key
- Unit features viewing slots, allowing technicians to see whether the trap has been activated
- Non-toxic
- No need to handle the trapped mouse
- Easy to set – Keeps fingers away from the trap
- Can be secured using the SX Fix N Go system

DIMENSIONS (MM): 150 X 120 X 60

PACK SIZE: SINGLE

ACCESSORIES: SXFIX (SX Fix N Go pads x 10)
 SXKEY (SX Key x 10)

ELECTRONIC MOUSE TRAP

PRODUCT CODE: ELECTMSE

Designed for indoor applications, the electronic mouse trap offers a good alternative to traditional methods in areas where chemicals can't be used. Mice entering the unit receive an electric shock, killing the rodent in seconds. The unit features a green warning light to show that the unit has been activated and will kill up to 50 mice on one set of 4 x AA batteries (not included).



PACK SIZE: SINGLE

ACCESSORIES: AABATTERIES (AA-size batteries x 1)

SX BAIT TRAY

PRODUCT CODES: TRAYL (Large)
 TRAYM (Medium)
 TRAYS (Small)



Mouse and rat bait trays.
 Colours may vary.

DIMENSIONS (MM): 145 X 94 X 30 (Large)
 85 X 65 X 21 (Medium)
 40 dia X 12.5 (Small)

PACK SIZE: 100

SNAP-E -MOUSE TRAP

PRODUCT CODE: SNAPEMSE



A modern trap designed to provide a fast, clean kill. The traps are set from behind to protect the operator's fingers. Snap-E Mouse Traps can be fitted into SX Trap-E Boxes to provide a non-toxic solution.

PACK SIZE: SINGLE

ACCESSORIES: SXTRAPEBK (SX Trap-E Box, Black x 15)
 SXTRAPEGR (SX Trap-E Box, Green x 15)
 SXTRAPCLEAR (SX Trap-E Box, Clear x 15)

LITTLE NIPPER MOUSE TRAP

PRODUCT CODE: LITLLEM



Traditional wooden trap offering non-toxic rodent control.

PACK SIZE: 30

LIVE MULTI-CATCH MOUSE TRAP

PRODUCT CODE: MULTIMSE



The Live Multi-Catch Mouse Trap can hold up to 15 mice and features two entrances for easy access. This robust station is made from galvanised steel and features a transparent lid for easy inspection.

DIMENSIONS (MM): 165 X 65 X 265

PACK SIZE: SINGLE

TRIP-TRAP

PRODUCT CODE: TRIPTRAP



These transparent live catch traps offer a single catch and are quick and easy to set and check.

PACK SIZE: 6

PEST-STOP MECHANICAL MOUSE TRAP

PRODUCT CODE: PESTSTOPMSE



This robust steel unit can catch up to 15 mice live in one setting.

PACK SIZE: SINGLE

SX CONTACT TUNNEL

PRODUCT CODES: SXCONTACTBLK (Black)
SXCONTACTWH (White)



Ideal for use with contact gels, these tunnels allow mice to run through the contact product and ingest rodenticide when grooming. Bases available in a choice of black or white.

DIMENSIONS (MM): 220 X 45 X 35

PACK SIZE: SINGLE

SX FIX N GO PADS

PRODUCT CODE: SXFIX



A ready to use fixing system to secure rat or mouse boxes to a wall, floor or surface, whilst allowing the box to be lifted for cleaning. Each 200mm plastic coated wire is fixed to two very high tack sticky pads and can be installed in seconds.

PACK SIZE: 10

SX FIX N GO DIY KIT

PRODUCT CODE: SXFIXDIY



This kit includes 200 pads, 100m of plastic coated wire, and 200 crimps, making up to 100 fixing kits.

PACK SIZE: SINGLE

SX MOUSE BOX BRACKET

PRODUCT CODE: SXMBRAC



This robust plastic bracket can be used with the SX Euro Mouse box to fit the station securely to the wall, preventing the box from being moved or stolen.

PACK SIZE: 100



SX MOUSE BOX SHOE

PRODUCT CODE: SXMSHOE

This metal mouse box holder is designed for use with the SX Euro Mouse box. The secure system means that the box can only be removed once it is unlocked.

PACK SIZE: 10



SX BOX KEY

PRODUCT CODE: SXKEY

SX's universal key designed for use with plastic rat and mouse boxes.

PACK SIZE: 10



SX ONE KEY

PRODUCT CODE: SXONEKEY

The SX One key is designed for use with plastic rat and mouse boxes, including the SX Slide Guard.

PACK SIZE: 10



FLUORESCENT TRACKING DUST

PRODUCT CODE: FLUDU250

This non toxic tracking dust can be used to help detect the movement of rodents as it fluoresces under UV light.

PACK SIZE: 250G/JAR

ACCESSORIES: FLUTORC (UV-500 tracking torch)

SX ONE RAT BOX

PRODUCT CODES: SXONE (Black)
 SXONEDKGRN (Dark Green)
 SXONECLEAR (Clear)
 SXONEBLU (Blue)
 SXONEGRN (Green)

**ADD YOUR
 LOGO
 TO THIS
 PRODUCT**



This unique rat bait station offers side opening, allowing it to be fixed to the wall even during servicing. It's stylish, water resistant design protects both grain and block bait. This product can also be customised with your logo, please call for further details.

- Manufactured from strong polypropylene
- Hinged lid
- Available in three colours as standard, black, dark green and clear
- Also available in blue and green, subject to minimum quantity order. Please call for further details
- Suitable for use with block or grain bait
- Can be used with the Snap-E rat trap as a non-toxic solution
- Water resistant, preserving bait
- Securing bracket for wall fixings (sold separately)
- Bait divider and rod included
- Lock designed to prevent water and ice build up
- Uses the SX Key
- Heavy duty polypropylene bait tray/liner available
- Rough floor surface to imitate the rodents natural environment



DIMENSIONS (MM): 250 X 170 X 115

PACK SIZE: 10

ACCESSORIES: SXONETRAY (SX One Tray x 10)
 SNAPERAT (Snap-E Rat Trap x 1)
 SXKEY (SX Key x 10)
 SXMULBRAC (SX Wall fixing bracket x 10)



SX EURO RAT BOX

PRODUCT CODE: SXERAT



The SX Euro Rat box is a robust rat box delivering excellent value for money whilst offering a range of baiting options for professional pest controllers. This product can also be customised with your logo, please call for further details.

- Manufactured from tough polypropylene
- Hinged lid
- Tamper resistant locking system or holes for cable ties
- Tunnel entrances are attractive to rodents
- Recommended for internal use
- Rods supplied to hold block bait
- Holds block, grain or liquid bait
- Lock designed to prevent water and ice build up

DIMENSIONS (MM): 300 X 185 X 100

PACK SIZE: 10

ACCESSORIES: SXFIX [SX Fix N Go pads x 10]
 LIQDISP [Liquid Dispenser Unit x 1]
 SXKEY [SX Key x 10]

SX MULTI-GUARD

PRODUCT CODES: SXMULBK (Black)
 SXMULGR (Green)



This tough, water resistant station is made of strong polypropylene and can be used with block, liquid or loose bait as well as non-toxic traps. The product features tunnel entrances to ensure that rodents quickly adapt to the product. This station can also be customised with your logo, please call for further details.

- Manufactured from tough polypropylene
- Hinged lid
- Available in two colours, black or green
- Suitable for use with block, liquid or loose bait
- Water resistant, featuring drainage holes and shaped lid to assist water displacement, and standing feet for better water resistance
- Fits against the wall
- Holds Snap-E Rat Trap securely for a non-toxic approach
- Additional wall bracket available (sold separately)
- Tunnel entrances are attractive to rodents
- Uses the SX Key
- Lock designed to prevent water and ice build up

DIMENSIONS (MM): 290 X 230 X 130

PACK SIZE: 10

ACCESSORIES: SXMULBRAC (SX Wall fixing bracket x 10)
 LIQDISP (Liquid Dispenser Unit x 1)
 SNAPERAT (Snap-E Rat Trap x 1)
 SXKEY (SX Key x 10)
 SXFIX (SX Fix N Go pads x 10)



SX RHINO

PRODUCT CODE: SXRHINO (Black)



The SX Rhino is an extremely robust, vandal proof and water resistant plastic rat bait station. Available in black, the SX Rhino can be used with loose or block baits or traps for non-toxic areas. This product can also be customised with your logo, please call for further details.

- Robust polypropylene
- Hinged lid
- Vandal resistant
- Remains secure in very hot and cold temperatures
- Water resistant
- Fits against the wall
- Fits the SX Wall fixing bracket
- Can be used with block or loose bait
- Accommodates Snap-E rat traps or 2 x Little Nippers for non-toxic approach
- Drainage holes eliminate water build up and standing feet for water resistance
- Lock designed to prevent water and ice build up
- Bait rod included

DIMENSIONS (MM): 290 X 230 X 130

PACK SIZE: SINGLE

ACCESSORIES: SNAPERAT (Snap-E Rat Trap x 1)
 LITTLER (Little Nippers)
 SXMULBRAC (SX Wall fixing bracket x 10)
 LIQDISP (Liquid Dispenser Unit x 1)
 SXKEY (SX Key x 10)
 SXFIX (SX Fix N Go pads x 10)

TRAP-IN-A-BOX RAT

PRODUCT CODE: TRAPBOXR



A ready to use unit for trapping rats, pre-assembled with a Snap-E rat trap inside. SX Trap-in-a-Box features a pull cord allowing the trap to be set from outside the box. The clear trap also allows the user to see when a rodent has been caught, reducing servicing time.

- Made from tough polypropylene
- Hinged lid
- Locked, secured bait station using the SX Key
- Lock designed to prevent water and ice build up
- Non-toxic
- No need to handle the trapped rat
- Easy to set – Keeps fingers away from the trap
- Unit features viewing slots, allowing technicians to see whether the trap has been activated

DIMENSIONS (MM): 250 X 170 X 115PACK SIZE: SINGLE

ACCESSORIES: SXFIX (SX Fix N Go pads x 10)
SXKEY (SX Key x 10)
SXKEY (Wall fixing bracket x 10)



SX TUNNEL

PRODUCT CODE: SXTUNNEL



This robust rat station is perfect for compact areas where space is tight, making it ideal for use between pallets. The high quality unit features a secure locking system and can be used with rodenticides or with traps as a non-toxic solution. This unit can be customised with your company logo, please call for more details.

- High quality plastic station
- Lock designed to prevent water and ice build up
- Ideal for use between pallets
- Can be used with loose or block bait
- Fits a range of traps for non-toxic sites
- The SX Key operates the secure lock
- Can be secured using SX Fix N Go pads
- Standing feet for increased water resistance
- Rough floor surface to imitate the rodents natural environment

DIMENSIONS (MM): 340 X 110 X 115

PACK SIZE: 16

ACCESSORIES: SXFIX (SX Fix N Go pads x 10)
 SNAPERAT (Snap-E Rat Trap x 1)
 SXKEY (SX Box Key)
 TRAYM (SX Bait Tray medium)

SX ECO GUARD

PRODUCT CODE: SXECO



The SX Eco Guard is the newest product in the SX rodent control station range and offers a flexible solution that is excellent value for money. The design of the unit means that it is ideal for situating in corners or against a wall. This product can also be customised with your logo, please call for further details.

- Good quality polypropylene construction
- Can be used with block or loose bait
- Can be anchored with SX Fix N Go Pads
- Lockable using the SX Eco Guard key, preventing unauthorised access to the bait
- Lock designed to prevent water and ice build up
- Designed for internal use

DIMENSIONS (MM): 300 X 170 X 70

PACK SIZE: 20

ACCESSORIES: SXFIX (SX Fix N Go pads x 10)



SX SLIDE GUARD

PRODUCT CODE: SXSLIDE



This water resistant rat bait station is designed for outdoor use, featuring an IP45 weatherproof lock and strong stainless steel design. The easy slide lid gives quick access to the bait for servicing and makes cleaning simple.

- Strong, black painted steel construction
- Easy access to bait
- Compatible with the SX One key
- Can be used with block or grain bait
- Can be used with the Snap-E rat trap as a non-toxic solution
- Attractive tunnel style entrances
- Floor and wall fixing points
- Easy to clean
- No hinges – Easy slide lid
- Bait tray and rod included

DIMENSIONS (MM): 320 X 150 X 120

PACK SIZE: SINGLE

ACCESSORIES: SXSLIDETRAY (SX Slide Feeding Tray x 10)
 SXONEKEY (SX One key x 10)
 SNAPERAT (Snap-E rat trap x 1)

SX STRONGHOLD

PRODUCT CODE: SXSTRONGHOLD



The SX Stronghold is a very robust, water tight rat bait station made from robust steel with an easy to clean plastic inner tray. The intelligent design allows the lid to open away from the wall, so that the unit can be positioned securely using the wall or floor fixing points. The station accommodates both blocks and loose bait, whilst drainage holes ensure that the unit can cope with wet weather.

- Strong, black painted steel construction
- Easy to clean inner tray
- Suitable for use with block and loose bait
- Attractive tunnel style entrances
- Drainage holes
- Floor and wall fixing points
- Secured access with the SX Stronghold key (supplied separately)
- Lid opens away from the wall

DIMENSIONS (MM): 330 X 200 X 100PACK SIZE: SINGLE**ACCESSORIES:** SXKEYSTRONG (SX Stronghold Key x 1)

ULTRABAIT VR

PRODUCT CODES: ULTRABLK (Black)
 ULTRAGRE (Green)



A superb metal bait station for rats. The Ultrabait station can be secured via screw holes in the base or with a wall fixing bracket to a wall. The Ultrabait is available in black or green and can be printed with your logo. Please call for further details.

DIMENSIONS (MM): 210 X 125 X 320

PACK SIZE: 6

ACCESSORIES:

- ULTRAKEY (Ultra Bait Rat Key x 1)
- ULTRABRK (Ultrabait Wall/Floor Bracket x 1)
- ULTRABRACKL (Ultrabait Light Weight Brackets x 1)
- ULTRABOLTS (Ultra Bait Floor Bolts x 1)

E-Z BAITER

PRODUCT CODE: EZBAITER



The E-Z Baiter is designed to show bait consumption at a glance using the transparent bait tubes. The sturdy waterproof exterior combined with the narrow design is ideal for use on ledges and walls, whilst the tunnel style entrance encourages rapid rodent acceptance. The secure unit also allows use of bait blocks or non-toxic Snap-E rat traps. Includes 2 tubes and lids.

DIMENSIONS (MM): 340 X 110 X 115 (WITHOUT TUBES)
 340 X 110 X 300 (WITH TUBES)

PACK SIZE: SINGLE

ACCESSORIES: VISITUBE (Spare bait tube x 2)
 SNAPERAT (Snap-E Rat Trap x 1)





COVERT MINI BAIT STATION

PRODUCT CODE: COVEMINI



Ideal for use as an above ground perimeter bait station, the Covert Mini bait station is discreet and extremely strong. The unit can also be buried in the ground as an underground station. Supplied with internal rat bait box, locking screws, keys and tunnels.

DIMENSIONS (MM): 320 X 120 X 220

PACK SIZE: SINGLE

COVERT BAIT STATION MK2

PRODUCT CODE: COVEMK2



The covert rat and mouse bait station has been designed specifically to offer a solution to baiting in publically accessible areas, including parks, recreation areas and landscaped urban areas. The station offers a discreet and secure solution, and is easy to site in a shallow hole in the soil, whilst the lid uses secured fixings to ensure that there is no unauthorised access to the bait. The rats and mice enter the underground chamber via two tunnels which can be placed close to the box or some distance away.

DIMENSIONS (MM): 630 X 120 X 480

PACK SIZE: SINGLE

SNAP-E RAT TRAP

PRODUCT CODE: SNAPERAT

A modern trap designed to provide a fast, clean kill. The traps are set from behind to protect the operator's fingers. Snap-E Rat traps can be used in the SX Multi-Guard and SX One Rat box.



PACK SIZE: SINGLE

LITTLE NIPPER RAT TRAP

PRODUCT CODE: LITTLER

A traditional wooden trap offering non-toxic rodent control. The Little Nipper Rat Trap fits into the SX Euro Rat box.



PACK SIZE: 6

ELECTRONIC RAT TRAP

PRODUCT CODE: ELECTRAT

Designed for indoor applications, the electronic rat trap offers a good alternative to traditional methods in areas where chemicals can't be used. Rats entering the unit receive an electric shock, killing the rodent in seconds. The unit features a green warning light to show that the unit has been activated and will kill up to 12 rats on one set of 4 x C batteries (not included).



PACK SIZE: SINGLE

ACCESSORIES: G015C (C-size batteries x 1)**SX BAIT TRAY**

PRODUCT CODE: TRAYL (Large)
TRAYM (Medium)
TRAYS (Small)

Mouse and rat bait trays.

Colours may vary.



DIMENSIONS (MM): 145 X 94 X 30 (Large)
85 X 65 X 21 (Medium)
40 dia x 12.5 (Small)

PACK SIZE: 100



SX RAT STOPPER

PRODUCT CODE: SXRATSTOP

A non-return valve that prevent rats entering drains, the valve simply pushes into the current pipework. The easy installation can be completed in minutes and does not require specialist expertise or equipment. Fits standard 110mm pipes.

PACK SIZE: SINGLE



SX FIX N GO PADS

PRODUCT CODE: SXFIX

A ready to use fixing system to secure rat or mouse boxes to a wall, floor or surface, whilst allowing the box to be lifted for cleaning. Each 200mm stainless steel wire is fixed to two very high tack sticky pads and can be installed in seconds.

PACK SIZE: 10



SX FIX N GO DIY KIT

PRODUCT CODE: SXFIXDIY

This kit includes 200 pads, 100m of plastic coated wire, and 200 crimps, making up to 100 fixing kits.

PACK SIZE: SINGLE



BAIT BOX SPIKE

PRODUCT CODE: SPIKE

Ideal for use in softer ground, the bait box spike can be used to secure bait boxes.

PACK SIZE: SINGLE



SX WALL FIXING BRACKET

PRODUCT CODE: SXMULBRAC

A plastic bracket designed for the SX Multi Guard, SX One and SX Rhino, enabling the box to be fixed to the wall making servicing quick and easy. Requires a 3.5mm drill.

PACK SIZE: 10



BAIT BOX FIXING PEG

PRODUCT CODE: PEG

A universal anchor point which can be used as a floor or wall fixing point for most types of bait station.

PACK SIZE: SINGLE



EURO ANCHOR

PRODUCT CODE: EUROANCH (Euro Anchor)
 DRIVE (Drive Rod)

The Euro Anchor allows for a securing block to be hammered up to 1 metre into the ground using the Drive Rod. Once bait boxes have been secured it is virtually impossible to remove them.

PACK SIZE: 12 (EURO ANCHOR); SINGLE (DRIVE ROD)

LIQUID DISPENSER UNIT

PRODUCT CODE: LIQDISP

A plastic liquid dispenser with snap-on feeding station offering an easy way of dispensing liquid bait. Ideal for use in the Multi-Guard and Euro Rat box.

PACK SIZE: SINGLE

**SX SLIDE FEEDING TRAY**

PRODUCT CODE: SXSLIDETRAY

Designed for use in the SX Slide Guard.

PACK SIZE: 10

**SPARE BAIT TUBE**

PRODUCT CODE: VISITUBE

Clear bait tubes for use in the E-Z Baiter.

PACK SIZE: 2

**FLUORESCENT TRACKING DUST**

PRODUCT CODE: FLUDU250

This non toxic tracking dust can be used to help detect the movement of rodents as it fluoresces under UV light.

PACK SIZE: 250G /JAR



ACCESSORIES: FLUTORC (UV-500 tracking torch)



SX BOX KEY

PRODUCT CODE: SXKEY

SX's universal key designed for use with rat and mouse plastic boxes.

PACK SIZE: 10



SX ONE KEY

PRODUCT CODE: SXONEKEY

The SX One key is designed for use with plastic rat and mouse boxes, including the SX Slide Guard.

PACK SIZE: 10



SXSTRONGHOLD AND ULTRA BAIT KEY

PRODUCT CODE: ULTRAKEY

Allows access to the SX Stronghold and Ultrabait rat box.

PACK SIZE: SINGLE



ULTRA BAIT BRACKETS

PRODUCT CODE: ULTRABRK (Wall/Floor Bracket)
ULTRABRACKL (WEIGHT BRACKETS)
ULTRABOLTS (FLOOR BOLTS)

Fixing kits designed for use with the Ultra Bait Rat box.

PACK SIZE: SINGLE

SX ODOUR TREAT – SUPER CONCENTRATE

PRODUCT CODE: SXODATREAT



SX Odour Treat contains non-pathogenic bacteria, is safe to use around pets and people, and is safe for use on carpets or furnishings. The product can be diluted or used neat and naturally breaks down odours using enzymes whilst also offering a powerful vanilla scent.

PACK SIZE: 500ML

SX ODA BLOCKS

PRODUCT CODES: SXODAMIX (Mixed)
 SXODA (Cherry)



Powerful scented deodorising blocks ideal for leaving in voids to give off fragrance for up to 4 weeks, masking the smell of dead rodents.

PACK SIZE: 12 BLOCKS



SX GLUEBOOKS

PRODUCT CODES: SXGLUEBOOK10R (Rat book)
 SXGLUEBOOK10M (Mouse book)
 SXGLUEBOOK100R (Rat book)
 SXGLUEBOOK100M (Mouse book)

Designed to allow rats and mice to be caught quickly and effectively, gluebooks are ideal for situations where traditional baiting methods are unsuitable. Colours may vary. Available in packs of 10 or 100.

DIMENSIONS (MM): 330 X 215 X 3 (RAT), 220 X 150 X 3 (MOUSE) PACK SIZE: 10 OR 100



SX GLUE INN

PRODUCT CODES: SXGLUEINNBK (Black)
 SXGLUEINNCL (Clear)

A dual purpose plastic glue trap which can be used for both mice and insects, the SX Glue Inn features a discreet slimline design to fit in almost all openings, making it suitable for both domestic and commercial use. This product can also be personalised with your logo. Please call for further details.

DIMENSIONS (MM): 210 X 120 X 40 PACK SIZE: 20

ACCESSORIES: SXUNIGLUE (SX Universal Glueboards x 140)



SX UNIVERSAL GLUEBOARDS

PRODUCT CODE: SXUNIGLUE

Impregnated with a powerful attractant and high tack glue, these boards are both effective and efficient, and can be used in conjunction with the SX Glue Inn or as a standalone glue trap.

DIMENSIONS (MM): 155 X 90 PACK SIZE: 140



ULTIMA GLUE RAT BOARD

PRODUCT CODE: GLUEULT

Featuring super soft glue, Ultima glueboards are very effective, even in cold environments.

DIMENSIONS (MM): 260 X 130 X 10 PACK SIZE: 48

PCOs MUST ENSURE THAT THEY ARE FAMILIAR WITH LOCAL REGULATIONS SURROUNDING THE IMPLEMENTATION AND MONITORING OF GLUEBOOKS.

MOUSESTOP

PRODUCT CODE: MOUSESTOP

Mousestop is a non-toxic paste which prevents mice from gaining entry into small spaces. The water-repellent paste is easily applied using a caulking gun and can be painted.

PACK SIZE: SINGLE



WIRE MESH ROLLS

PRODUCT CODES: MESH01 (50mm² x 6m roll x 1.2m width)
MESH02 (6.5mm² x 6m roll x 1m width)
MESH03 (25mm² x 6m roll x 0.9m width)
MESH04 (25mm² x 30m roll x 0.9m width)
MESH15 (6.5mm² x 6m roll x 0.3m width)

Ideal for proofing against rodents, birds, squirrels and rabbits, wire mesh is available in various sizes to prevent small animals gaining access to buildings and other areas.

PACK SIZE: SINGLE



ACCESSORIES: MESHCLIP (SX Mesh Clip With Hole)
MESHCLIP2 (SX Mesh Clip Without Hole)

SX MESH CLIPS

PRODUCT CODES: MESHCLIP (With hole)
MESHCLIP2 (Without hole)



Wire mesh clips with and without hole. Ideal for fixing wire mesh into place.

DIMENSIONS(MM): 21 X 19 (HOLE DIAMETER: 5MM)

PACK SIZE: 50

PROOFING PLATE

PRODUCT CODE: SXPLATE
SXPLATE500X250MM

Ideal for proofing around pipes and beams the SX Proofing Plate is made from aluminium and can be cut to any size or shape required.

Available in 2 sizes: 250mm x 120mm or 500mm x 250mm



PACK SIZE: 10 (SX PLATE); SINGLE (SXPLATE500X250)

BRISTLE STRIP

PRODUCT CODES: BRIS20MM (20mm x 2000mm)
 BRIS25MM (25mm x 2000mm)
 BRIS35MM (35mm x 2000mm)
 BRIS50MM (50mm x 2000mm)
 BRIS75MM (75mm x 2000mm)
 BRIS100MM (100mm x 2000mm)
 BRIS150MM (150mm x 2000mm)



A dual-purpose bristle strip that keeps insects, birds and rodents out as well as creating a seal against draughts, dust and noise pollution. The strips come on a flat carrier and are supplied in 2 metre lengths.

PACK SIZE: SINGLE

WIRE WOOL

PRODUCT CODES: WIREWOOL



Medium grade wirewool, ideal for filling holes or for cleaning purposes.

PACK SIZE: SINGLE

SELF-TAPPING HEX HEADED SCREWS

PRODUCT CODE: HEXGLV30 (GALVANISED 19MM)
 HEXSS30 (STAINLESS STEEL 30MM)



4.8mm diameter galvanised or stainless steel hex headed screw. Can be used with 8mm nut spinner or hex head socket.

PACK SIZE: 100

SOUDAFOAM

PRODUCT CODE: SOUDAFOAM (500ml Foam)
 SOUDAFOAM750 (750ml Foam)
 SOUDAFOAM2 (500ml Cleaner)

A polyurethane expanding foam ideal for filling holes, gaps and around pipes. Each can will provide approximately 15 litres of foam when freely foamed.

PACK SIZE: SINGLE

**SOUDAFOAM CLICK & FIX SYSTEM**

PRODUCT CODE: SOUDAFOAM3 (750ml Fire-rated Click & Fix)
 SOUDAFOAM4 (Click & Fix Gun)
 SOUDAFOAM5 (Click & Fix Gun Cleaner)

The Soudafoam Click & Fix System is an easy to use, self-expanding polyurethane foam which has been fitted with the unique patented Click & Fix adaptor systems for maximum comfort in use. It has a fire rating of up to 360 minutes.

PACK SIZE: SINGLE



SX BUG TRAY

PRODUCT CODES: SXBUGBLK (Black)
 SXBUGGRN (Green)
 SXBUGRD (Red)
 SXBUGWH (White)
 SXBUGBL (Blue)



An innovative solution to attract roaches under your bait box rather than into it, the SX Bug Tray can be used with SX Insect Pads and clips underneath the SX Euro Mouse box. The SX Bug Tray is available in a range of colours to co-ordinate with your bait box.

DIMENSIONS (MM): 120 X 73 X 12

PACK SIZE: 50

ACCESSORIES: SXPADS (SX Insect Pads x 100)
 PADS (Insect Pads x 10)

SX INSECT GUARD

PRODUCT CODES: SXINSBK (Black)
 SXINSGR (Green)
 SXINSRD (Red)
 SXINSWH (White)
 SXINSBL (Blue)



This robust plastic insect trap and monitor sits discreetly underneath the SX Euro Mouse box and is designed for use with SX Insect Pads. Available in black, green, red, white and blue, the product can also be personalised with your logo. Please call for further details.

DIMENSIONS (MM): 140 X 85 X 20

PACK SIZE: 50

ACCESSORIES: SXPADS (SX Insect Pads x 100)
 PADS (Insect Pads x 10)

SX INSECT PADS

PRODUCT CODE: SXPADS

These pre-baited glue pads are suitable for use in most plastic insect monitors. The powerful attractant is designed to entice cockroaches to your trap, whilst the printed insect grids make catch analysis quick and easy.

PACK SIZE: 100

**SX INSECT INN**

PRODUCT CODE: SXINSINN

Designed for use against crawling insects, the SX Insect Inn is particularly useful as an ant or cockroach station. Made from tough, rigid plastic the unit protects and contains the gel and also allows easy removal after treatment.



PACK SIZE: 50

ACCESSORIES: BAITGUNP (Budget Gel Bait Gun x 1)**INSECT PADS**

PRODUCT CODE: PADS

These plastic pads are very cost effective, and can be used multiple times with the SX Insect Guard. A separate lure is required to attract insects to the trap.

PACK SIZE: 10



ACCESSORIES: SXINSBK (SX Insect Guard)
LURES-COCKR (Cockroach lures)
LURES-ATTAG (Carpet beetle lures)
LURES-TRIB (Flour beetle lures)

SX DETECT IT TRAP

PRODUCT CODE: SXDETEC

A prebaited trap which becomes a three part detector by separating along the perforations. Quick and easy to use, the trap does not require a separate lure. Personalisation available subject to minimum order volume. Please call for further details.

PACK SIZE: 10 X PK 10 X 3 (300 UNITS)

**ECO-CATCH INSECT TRAP**

PRODUCT CODE: ECOTRAP300

A highly effective three part monitoring trap which uses prebaited glue, removing the need for separate lures.

PACK SIZE: 10 X PK 10 X 3 (300 UNITS)



**SX BAIT BUTTON**

PRODUCT CODES: SXBUTTON (White)
SXBUTTONBL (Blue)

An innovative solution for laying gel bait for ants and cockroaches. The unit acts as a feeding station, enabling you to actively see activity areas, whilst also allowing easy removal of the bait after treatment. Available in blue (for food premises) or white.

PACK SIZE: 100

ACCESSORIES: SXSTICKY (Sticky pads x 100)

BUDGET GEL BAIT GUN

PRODUCT CODE: BAITGUNP



A very high quality, robust and simple to use low cost gel applicator, which can be used for all syringe style bait.

PACK SIZE: SINGLE

ACCESSORIES: TIPS01 (Plastic tips x 10)
TIPS02 (S/S Tips x 10)

B&G BAIT GUN

PRODUCT CODES: B&GBAITGUN



This multi-dose bait gun allows for the precise placement of gels. Six different dose settings make the accurate and economical use of bait quick and easy.

PACK SIZE: SINGLE

SX ROACHAWAY

Product code: SXROACH10 (10 Pack)
SXROACH100 (100 Pack)



The SX Roachaway is a cardboard trap with pre-baited glue, meaning there is no need to use an additional lure.

PACK SIZE: 10 OR 100

LURES

Product code: LURES-COCKR (Cockroach lures)
LURES-ATTAG (Carpet beetle lures)
LURES-TRIB (Flour beetle lures)



These long-life lures are packed in form sealed foil packaging to ensure freshness and are ideal for use with insect traps that require a separate lure. Lures are available to attract cockroaches, carpet beetles and flour beetles.

PACK SIZE: 10

ACCESSORIES: PADS (Insect Pads)

SLUG TAPE

Product code: SLUGTAPE



This self adhesive copper tape is ideal for use with SX rat bait stations. Simply stick the tape around the tunnel entrances to prevent slugs and snails from entering the box.

PACK SIZE: SINGLE

**BED BUG INN**

PRODUCT CODES: BEDBUGINN



The Bed Bug Inn is an innovative device used to detect the presence of bed bugs by providing a harbourage for them. If activity is detected, treatment can be arranged.

DIMENSIONS (MM): 140 X 85 X 20PACK SIZE: SINGLE**BED BUG CARD MONITOR**

PRODUCT CODES: BEDBUGMONITOR

The Bed Bug Card Monitor is a passive trap to help monitor the presence of bed bugs in places where activity is suspected. The layered, corrugated cardboard mimics cracks and crevices – bed bugs' favoured harbourages. The light colouration of the cardboard will show excreted gut contents as red or brown spots which aids in detection.

PACK SIZE: 10**BED BUG BARRIER**PRODUCT CODES: BEDBUGCASTER (Caster barrier)
BEDBUGSCREW (Screw in barrier)

The Bed Bug Barrier uses natural, non-toxic glues to create an impassable floor barrier and trap bed bugs before they can reach sleeping victims. The non-drying, long lasting glue is not only effective at keeping bed bugs away from victims but it is also discreet and easy to use. The Bed Bug Barrier is available as either a caster barrier or a screw in barrier.

PACK SIZE: SINGLE

MOTH TRAPS AND MONITORING

SX CLOTHES MOTH TRAPS

PRODUCT CODE: SXCLOTH-MOTH

The visual cheque and the powerful lure of the SX Clothes Moth Trap ensures a high catch rate, while the non-drying glue ensures that all moths are caught and stick to the pad.



PACK SIZE: 10

BLACK AND WHITE CHEQUERED MOTH POT

PRODUCT CODE: SXMOTHPOT

The Black and White Chequered Moth Pot is ideal for monitoring moth pests in stored foods, giving early warning of infestation. Trapped moths can be retained in the funnel traps by sticky card funnel liners. All pots come complete with inserted lure.



PACK SIZE: SINGLE

ACCESSORIES: SXMOTHPOTL (Moth Pot Liners)

MOTH POT LINERS

PRODUCT CODES: SXMOTHPOTL

The chequered moth pot liner is impregnated with powerful moth lure to attract moths into the funnel trap.



PACK SIZE: 10

ACCESSORIES: SXMOTHPOT (Black and White chequered moth pot)

DELTA MOTH TRAP

PRODUCT CODES: DELTA

The Delta Moth Trap can be used for monitoring stored products moths in non-dusty food processing and storage areas. It is recommended that the pheromone dispensers and sticky inserts are replaced every 6 weeks. Each pack contains one trap, one insert and one dispenser.



PACK SIZE: SINGLE

SPECTRUM 3 MONTH DISPENSERS

PRODUCT CODES: LURES- BLUE
 LURES-GREEN
 LURES-RED
 LURES-YELLOW



The Spectrum 3 Month Dispensers are available in 4 different colours to reflect easy seasonal control (Blue January – March; Green – April – June; Red – July – September; Yellow – October – December). Each lure is effective for the control of the *Ephestia* and the *Plodia interpunctuella* species.

PACK SIZE: SINGLE

LURES

PRODUCT CODE: LURES-EPHES (Stored product moth lures)
 LURES-TINEOLA (Clothes moth lures)
 LURES-ELUTEL (Warehouse moth lures)



These long-life lures are packed in form sealed foil packaging to ensure freshness and are ideal for use with insect traps that require a separate lure. Lures are available to attract a stored product, clothes or warehouse moths.

PACK SIZE: 10

SX WASP DOMES

PRODUCT CODE: SXWASP



The SX Wasp Dome is ideal for attracting and trapping wasps. The dome can be suspended or self-standing.

PACK SIZE: SINGLE

SX YELLOW TOP TRAP

PRODUCT CODE: SXYELLOWTOP

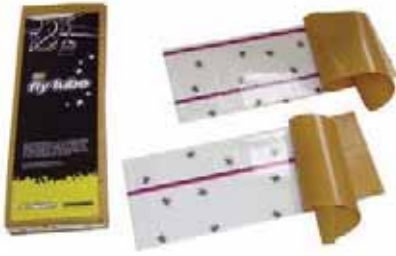


The SX Yellow Top Trap is an effective pot trap for both flies and wasps. The SX Yellow Top Trap can be suspended or self standing.

PACK SIZE: SINGLE

SX FLY TUBES

PRODUCT CODE: FLYTUBE12



SX Fly Tubes are the ideal solution for wrapping round beams and pipes or to pin up in areas where flies accumulate, such as light fittings. The glue coated paper attracts flies with its stripy design and imitation fly pattern.

DIMENSIONS(MM): 100M X 300

PACK SIZE: 60 SHEETS

SX STICKY ROLL

PRODUCT CODE: FLYROLL9



The SX Sticky Roll provides an effective, non toxic solution for flying insect problems. Complete with a hanger for easy positioning, the roll can be hung near the source of the problem and the required length of roll can be pulled out.

DIMENSIONS(M): 9 X 0.3

PACK SIZE: SINGLE

SX FLY RIBBON KIT

PRODUCT CODE: FLYRIB
 FLYRIBREFIL (Replacement ribbon)

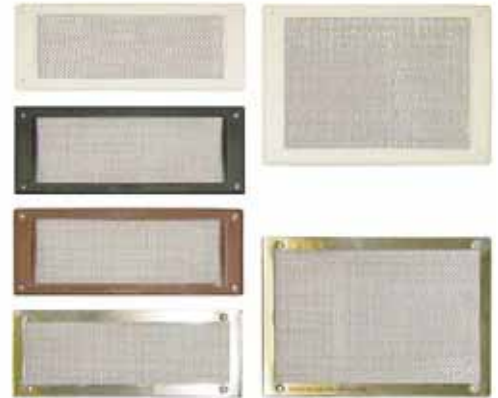


Ideal for animal housing sheds the SX Fly Ribbon Kit is easy to install with three pulleys and guide eyes. Simply wind out the required length and wind on when the ribbon is full. A replacement ribbon is also available.

PACK SIZE: SINGLE

SX VENT

PRODUCT CODES: SXVENTSMLBK (Small, black uPVC)
 SXVENTSMLBR (Small, brown uPVC)
 SXVENTSML (Small, white uPVC)
 SXVENTMED (Medium, white uPVC)
 SXVENTSMLSS (Small, stainless steel)
 SXVENTMEDSS (Medium, stainless steel)
 SXVENTLRGSS (Large, stainless steel)



Ideal for proofing airbricks or vents against mice and wasps, this easy to fit product has a uPVC frame with a stainless steel mesh insert and is fixed via the screw guide holes at the front. Also available with a stainless steel surround.

DIMENSIONS (MM): 245 X 95 (SMALL),

245 X 170 (MEDIUM), 245 X 245 (LARGE)

PACK SIZE: SINGLE

SX WEEP HOLE PROTECTOR

PRODUCT CODE: SXWEEPHOLE

This unique unit fits well into mortar joints left in brickwork to allow air movement whilst preventing access by mice and most flying and crawling insects. (Colours may vary).

DIMENSIONS (MM): 65 X 9

PACK SIZE: 20

**FLYSCREEN KITS**

PRODUCT CODES:	SCR0190	650MM X 950MM
	SCR0191	950MM X 950MM
	SCR0192	950MM X 1250MM
	SCR0193	1250MM X 1250MM
	SCR0194	1250MM X 1550MM



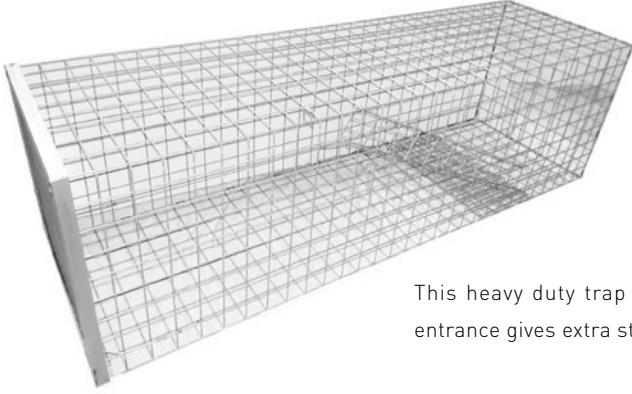
Flyscreen kits provide a quick and easy solution for windows in food preparation and service areas, ensuring compliance with food regulations.

- Robust mitred corners
- Metal corner fixings
- Strong metal frame
- Can be installed as a fixed or hinged screen



SX FOX/DOG TRAP

PRODUCT CODES: SXFOX/DOG



This heavy duty trap is suitable for dogs and foxes. The solid steel frame around the entrance gives extra strength and prevents trapped animals from escaping.

DIMENSIONS (MM): 460 X 460 X 1530PACK SIZE: SINGLE**SX FOXAWAY TRAP**

PRODUCT CODE: SXFOXAWAY



A heavy duty trap suitable for catching dogs and foxes, the SX Foxaway trap folds flat for easy carriage and storage.

DIMENSIONS (MM): 400 X 510 X 1150PACK SIZE: SINGLE**MONARCH RAT TRAP**

PRODUCT CODE: MONARCH



A robust metal rat trap with a one-way entrance and self-resetting door to the retention area allowing for multiple catches.

DIMENSIONS (MM): 430 X 180 X 240PACK SIZE: SINGLE

LIVE CATCH CAGE TRAPS

ELGEECO SQUIRREL TRAP

PRODUCT CODE: ELGEECO

This heavy duty, single catch squirrel trap has a top sprung door and separate floor door as well as a strong carry handle. The galvanised 25mm square welded mesh with 29mm round holes also allows for the entry of small birds.

An all metal 180mm peanut bird feeder is included.

DIMENSIONS (MM): 225 X 355 X 225

PACK SIZE: SINGLE



SX SQUIRREL TRAP

PRODUCT CODE: SXSQUIRREL

The SX Squirrel Trap is a high quality, British made trap suitable for trapping squirrels and other small animals.

DIMENSIONS (MM): 180 X 160 X 590

PACK SIZE: SINGLE



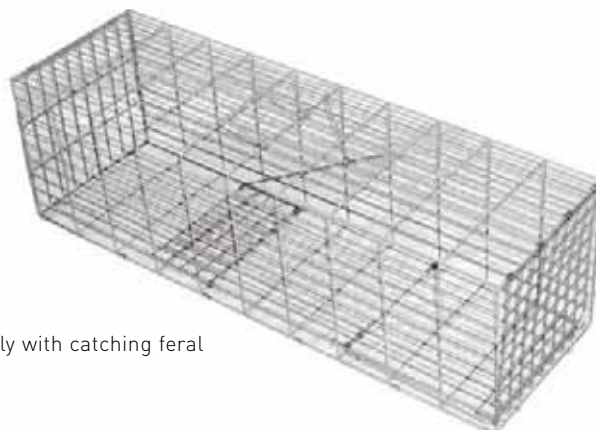
SX CAT TRAP

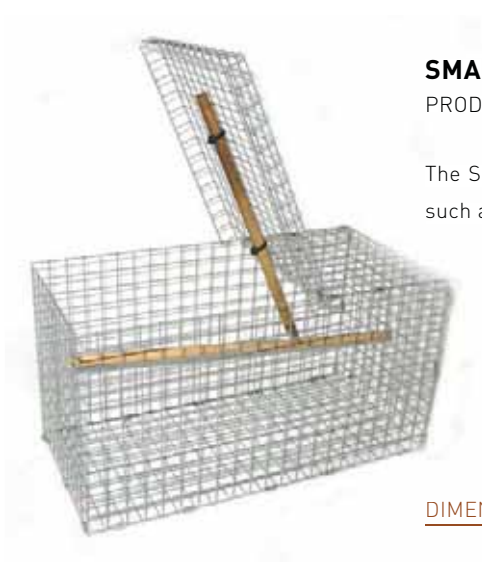
PRODUCT CODES: SXCAT

The heavy duty SX Cat Trap is a strong, robust unit designed specifically with catching feral cats in mind.

DIMENSIONS (MM): 230 X 230 X 770

PACK SIZE: SINGLE



**SMALL BIRD TRAP**

PRODUCT CODE: SPARROWTRAP

The Small Bird Trap is a chardonnay style bird trap which is ideal for catching small birds such as sparrows.

DIMENSIONS (MM): 195 X 210 X 400

PACK SIZE: SINGLE

SPARROW TRAP

PRODUCT CODE: SPARROWMULTI

The Sparrow Trap is a rigid, multi-catch trap with 2 one-way entrance tunnels leading to a trapping section. From here a further one-way entrance tunnel leads to the holding section.



DIMENSIONS (MM): 620 X 3500 X 220

PACK SIZE: SINGLE

SX PIGEON TRAP

PRODUCT CODE: PIGETRAP01



The SX Pigeon Trap is a multi-catch trap featuring 2 one-way doors, a robust carry handle and a top hatch to remove trapped birds.

DIMENSIONS(MM): 770 X 230 X 470

PACK SIZE: SINGLE

LIVE CATCH CAGE TRAPS

FOLD FLAT PIGEON TRAP

PRODUCT CODE: PIGETRAP02



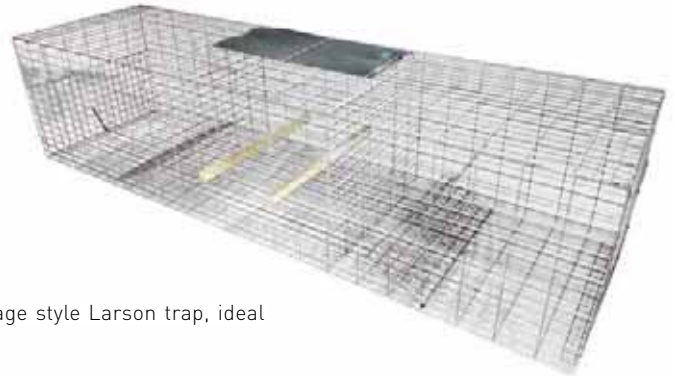
The Fold Flat Pigeon Trap is easy to use and reliable. The trap features 2 one-way entry doors and a top hatch to enable trapped birds to be removed easily. The trap also folds flat for easy transportation.

DIMENSIONS (MM): 600 X 350 X 470

PACK SIZE: SINGE

SX LARSON TRAP

PRODUCT CODE: SXLARSON



The SX Larson Trap is an incredibly rigid and durable double cage style Larson trap, ideal for catching magpies and other similar sized birds.

DIMENSIONS (MM): 460 X 390 X 1610

PACK SIZE: SINGLE

MULTI-SPECIES TRAP

PRODUCT CODE: TRAP01



Removing the need for multiple traps, this adaptable trap covers a range of species including squirrels, mink and rats (with the front mesh attached) and rabbits and cats (with the front mesh removed). This adaptable trap also features a handy carry handle.

DIMENSIONS (MM): 260 X 230 X 590PACK SIZE: SINGLE**SX RAT TRAP**

PRODUCT CODE: SXRAT



A sturdy compact trap, which is very easy to set. This trap includes a carry handle and a steel bait tray.

DIMENSIONS (MM): 155 X 140 X 380PACK SIZE: SINGLE

DUSTICK COMPLETE KIT

PRODUCT CODE: DUSTICK

The Dustick Complete Kit is quick and easy to use at heights from 0.5 metres up to 5.5 metres, making it ideal for the treatment of wasp nests. Each kit contains:

- 1 x canvas carry bag
- 3 x 1.2m aluminium extension lances
- Complete dust canister
- Pump
- Pump connection adaptor
- 1 x 1.2m extension lance with pin

PACK SIZE: SINGLE



ACCESSORIES: DUSTICK01 (Dustick Bag)

DUSTICK BAG

PRODUCT CODE: DUSTICK01

Replacement carry bag for the Dustick Complete Kit.

PACK SIZE: SINGLE

ACCESSORIES: DUSTICK (Dustick Complete Kit)

DR5 DUST APPLICATOR

PRODUCT CODES: DR5

The DR5 Dust Applicator is a popular 5 litre unit that provides a steady flow of powder mixed with air.

PACK SIZE: SINGLE

ACCESSORIES: EXT1.5A (Aluminium Extension Lance)

**DUSTMASTER 3 LITRE**

PRODUCT COD: DUSTM3

The Dustmaster is a high quality, compact 3 litre duster that provides a steady flow of powder mixed with air to help prevent blockages. The small tank is easy for use in lofts and up ladders.

PACK SIZE: SINGLE

**ALUMINIUM EXTENSION LANCE**

PRODUCT CODES: EXT1.5A (1.5m lance)
EXT1A (1m lance)



1 and 1.5 metre aluminium extension lances for use with a variety of dust applicators, including the DR5.

PACK SIZE: SINGLE

ACCESSORIES: DR5 (DR5 Dust Applicator)

B&G 2600 FOGGER 220V

PRODUCT CODE: B&GFOG220



The B&G 2600 Fogger is a simple, robust and highly effective machine. With a 6 litre tank and a 5.5 metre hose the B&G 2600 Fogger is ideal for a variety of applications.

PACK SIZE: SINGLE

MESTO INOX 6 LITRE STAINLESS STEEL SPRAYER

PRODUCT CODE: MEST06SS



The Mesto Inox 6 Litre, 6 Bar, Stainless Steel Sprayer comes complete with a 2.5 metre spiral hose with safety interlock and a 360° rotatable, 50cm brass spray wand.

- Carried at the side
- Flat spray nozzle with fine filter
- Chemical resistant gaskets
- Holder for spray and extension wand
- Pump holder
- Spare parts compartment
- Exchangeable safety valve and pressure gauge
- Sight glass for fill level

PACK SIZE: SINGLE

CLEANING EQUIPMENT**LOFT-MATE CRAWL BOARD**

PRODUCT CODE: LOFT

A lightweight, robust crawl board set that enables operatives to work safely within loft spaces.

DIMENSIONS (MM): 1500 X 450

PACK SIZE: SINGLE

**SX POWER WIPES**

PRODUCT CODE: SXPOWER (Large wipes)
SXPROBE (Small)

These powerful hand and surface wipes remove oil, grease, dirt and grime as well as killing bacteria. SX Power Wipes and SX Probe Wipes kill leptospirosis bacteria and are effective against Weils disease.

PACK SIZE: 150 PER TUB

**SCRAPER**

PRODUCT CODES: SCRAP04 (Small, 51mm)
SCRAP02 (Large, 108mm)
SCRAP03 (Long handled steel scraper)

Ideal for removing guano and other grime from buildings and pavements, these scrapers are available as a robust plastic hand held tool or a long handled, stainless steel scraper.

PACK SIZE: SINGLE

**PLASTIC SHOVEL**

PRODUCT CODE: SHOVEL

A robust plastic shovel for cleaning up rubbish and mess.

PACK SIZE: SINGLE

**SCOOP**

PRODUCT CODES: SCOOPS (Small)
SCOOPM (Medium)
SCOOPL (Large)

Available in 3 different sizes these plastic scoops are ideal for dispensing bait as well as for clearing up mess.

PACK SIZE: SINGLE

**SPOON**

PRODUCT CODE: SPOON

Long handled baiting spoon, ideal for placing bait in hard to reach areas.

PACK SIZE: SINGLE





CABLE TIES

PRODUCT CODES: CABLE01 (100mm X 2.5mm)
 CABLE02 (160mm X 2.5mm)
 CABLE03 (200mm X 4.8mm)
 CABLE04 (300mm X 4.8mm)

These tough, high quality cable ties are ideal for securing traps and bait boxes in position.

PACK SIZE: 100



TUB WITH SCREW TIGHT LID

PRODUCT CODES: DECANT500 (500g)
 DECANT1 (1Kg)

Ideal for decanting bait, this tub comes complete with a screw tight lid and is available in a 500g or 1Kg capacity.

PACK SIZE: SINGLE



BUCKET AND LID

PRODUCT CODE: DECANT3 (3Kg)
 DECANT10-12 (10-12Kg)

Ideal for decanting bait, this bucket comes complete with a lid and is available in a 3Kg or 10-12Kg capacity.

PACK SIZE: SINGLE



DRUM

PRODUCT CODES: DECANT20 (20Kg)
 DECANT25 (25Kg)

Ideal for decanting bait, this large drum is available in a 20Kg or 25Kg capacity.

PACK SIZE: SINGLE



CLEAR DECANTING JAR

PRODUCT CODES: DECANTJAR500 (500ml)
 DECANTJAR1000 (1 Litre)
 DECANTJAR2000 (2 Litre)

Available in a 500ml, 1 litre or 2 litre capacity these clear decanting jars are suitable for holding a variety of liquids.

PACK SIZE: 10



MAGNIFYING POT

PRODUCT CODE: MAGNIFY

Clear plastic specimen pot with magnifying lid giving 4.5 x magnification.

DIMENSIONS(MM): 60 X 70 DIAMETER

PACK SIZE: SINGLE



SPECIMEN COLLECTING JAR

PRODUCT CODE: SPECBOT

This 20ml specimen collection pot with a leak tight lid is ideal for storing and sending insects for identification.

PACK SIZE: 10

SL VIDEO INSPECTION CAMERA

PRODUCT CODE: SLCAMERA

The SL Video Inspection Camera is a cost effective mini IP67 rated waterproof colour camera allowing for easy visual inspections in restricted areas. The camera comes with a carry case with 256mb Micro SD card, video cable, USB cable, magnet, hook and mirror end attachments and 4 x AA batteries.

- Super thin 9mm head and 1 metre flexible tube
- 2.7" colour TFT-LCD monitor with clear picture resolution allows quick and easy visuals
- Captures still images
- Records video to 30 frames per second
- Lens mounted LED lights on the end of the camera allows the user to inspect images in zero light, at up to 1.5 metres
- 3 year manufacturer's guarantee



PACK SIZE: SINGLE

SEESNAKE CAMERA

PRODUCT CODES: SEESNAKE (Inspection Camera)
 SEEEXT (Seesnake 90cm extension)
 SEEEXTCAM (Seesnake extension with camera)

The Seesnake Camera allows users to view images on a high visibility LCD monitor. The waterproof camera is equipped with fully adjustable LED lighting and a flexible 3 foot cable. The 2.5" colour LCD allows for a 3 hour battery time.



PACK SIZE: SINGLE



LED POCKET LIGHT

PRODUCT CODE: LEDPOCKET

A small but powerful torch, giving a 100 metre beam from 1 AA size battery. Comes complete with wrist strap and battery.

PACK SIZE: SINGLE



CLULITE CLASSIC

PRODUCT CODE: CLULITE

Designed for easy maintenance the Clulite classic torch is a lightweight hand lamp, featuring a 6v maintenance free, rechargeable battery. The torch features a spot beam of 300 metres and can be used continuously for up to 4 hours.

Comes complete with a mains charger.

PACK SIZE: SINGLE



3D MAG-LITE

PRODUCT CODE: MAG3D

The Mag-Lite is made from rugged, machined anodized aluminium. Adjustable light beams make it far brighter than other commercial torches, with reflectors designed to achieve maximum brilliance under all conditions. Water and shock resistant.

Requires 3 x D sized batteries (not included)

PACK SIZE: SINGLE



MINI MAG-LITE

PRODUCT CODE: MAGMINI

The popular 'mini' version of the classic 3D Mag-Lite. Built to the same high specifications. Complete with batteries and spare bulb.

PACK SIZE: SINGLE



UV-500 TRACKING TORCH

PRODUCT CODE: FLUTORC

The UV-500 tracking torch is an ultraviolet torch, ideal for use with florescent tracking dust, and also features a non-UV torch on the end.

Requires 4 x AA batteries (not included)

PACK SIZE: SINGLE



UV LED HAND TORCH

PRODUCT CODE: UVTORCH

This strong, hand held UV torch is built with an aluminium body for extra resistance and is ideal for use with fluorescent tracking dust.

PACK SIZE: SINGLE

CARCUS DISPOSAL BAGS

PRODUCT CODE: BAG01



Useful for sealing and carrying dead rodents or birds. Manufactured from tough plastic, the bag also features a permanent sealable top. An easy and clean method of transporting dead rodents and birds.

DIMENSIONS (MM): 330 X 483PACK SIZE: 10**BAGS**PRODUCT CODES: BAG02 (Blue)
BAG03 (Clear)

Strong aggregate sack made of heavy duty plastic.

DIMENSIONS (MM): 508 X 762PACK SIZE: 10**HEAVY DUTY BLACK PLASTIC BAGS**

PRODUCT CODE: BAG06 (Black)

DIMENSIONS (MM): 508 X 915PACK SIZE: 100**LITTER PICKER**

PRODUCT CODE: LITTER



An 810mm long litter picker ideal for picking up needles or placing and retrieving mouse boxes in difficult-to-reach locations.

PACK SIZE: SINGLE

THE SERVICEMAN HOLDALL

PRODUCT CODE: HOLDALL



The Serviceman Holdall is a high quality, very durable holdall ideal for transporting tools and equipment. Complete with a shoulder strap to make carrying easy, the holdall is washable and has removable internal sections for easy storage as well as a separate compartment for paperwork.

PACK SIZE: SINGLE

DELUXE HOLDALL

PRODUCT CODE: HOLDALLDELUXE



The Deluxe Holdall is a comprehensive, heavy duty holdall. Complete with 5 external and 8 internal pockets, the Deluxe Holdall features a wide open top and padded shoulder strap for comfort.

PACK SIZE: SINGLE

TRANSIT BOX

PRODUCT CODE: CAB01

A tough steel box designed for use in vehicles.

- Constructed from zintec-coated steel
- Flanged lids with retaining device to prevent the lid falling backwards
- Finished in light grey stove enamel
- Hasp and staple allows padlock to be added
- Can be bolted down in your vehicle for extra security



DIMENSIONS (MM): 635 X 508 X 335

PACK SIZE: SINGLE

LARGE TRANSIT BOX

PRODUCT CODE: CAB05

Additional space for transportation of bulky hazardous goods.

- Constructed from zintec-coated steel
- Flanged lids with retaining device to prevent the lid falling backwards
- Finished in light grey stove enamel
- Hasp and staple allows padlock to be added
- Can be bolted down in your vehicle for extra security
- Seperate internal compartment for liquids



DIMENSIONS (MM): 914 X 609 X 609

PACK SIZE: SINGLE

Cabinets are not a stock item. Please allow 14 days for delivery.

CHEMLOCK® TRANSPORT CONTAINERS

PRODUCT CODES: CHEMLOCKPEST
CHEMLOCKDUALBOX



The Chemlock Pest and Chemlock Dual transport box are made from specifically formulated thermoplastic and are designed to be super strong and chemical resistant. The Chemlock Pest box can be used as a standalone box or in conjunction with a Chemlock Dual transport box, providing double protection.

DIMENSIONS (MM): (PEST PARTNER SIZE) 350 X 154 X 120

[DUAL BOX SIZE] 560 X 390 X 445

PACK SIZE: SINGLE

DISPOSABLE GLOVES

PRODUCT CODES: VINYMED (Medium)
VINYMEDNP (Medium, non-powdered)
VINYL (Large)
VINYLNP (Large, non-powdered)
VINYLXL (Extra large)
VINYLXLNP (Extra large, non-powdered)



Powdered and non powdered disposable gloves to protect the users hands from dirt and grime.

PACK SIZE: 100

NITRILE DISPOSABLE GLOVES

PRODUCT CODES: NITRILELRG (Large)
NITRILE (XL)



Disposable, powder free nitrile gloves.

PACK SIZE: 100

TOUCH N TUFF GLOVES

PRODUCT CODES: TOUCHNGLM (Medium)
TOUCHNGLL (Large)
TOUCHNGLXL (XL)



Touch N Tuff powder free, nitrile gloves provide the user with a good level of protection.

PACK SIZE: 100

SOLVEX PLUS - UNSUPPORTED NITRILE GLOVES

PRODUCT CODES: SOLV13 (Size 9)
SOLV18 (Size 10)



Solvex Plus solvent resistant gloves are highly flexible and resistant to both chemicals and oils. Solvex gloves are ideal for handling products where a sensitive touch is important. Available as a 33cm glove or a 46cm gauntlet.

PACK SIZE: 1 PAIR

PVC GAUNTLETS

PRODUCT CODE: PVCGAUNT



350mm long PVC rubber gloves are water resistant and ideal for wet jobs.

PACK SIZE: 1 PAIR

PVC DIPPED RUBBER GLOVES

PRODUCT CODE: PVCGLOVES

PVC rubber gloves for general use in wet preparations.

PACK SIZE: 10 PAIRS**LEATHER RIGGERS**

PRODUCT CODE: LEATHRIG

These high quality leather rigger gloves are ideal for tough situations where protection is important.

PACK SIZE: 10 PAIRS**BEE KEEPING GLOVES**

PRODUCT CODES: BEEGLOVES9 (Size 9)

BEEGLOVE10 (Size 10)

BEEGLOVE11 (Size 11)

BEEGLOVE12 (Size 12)

Washable, soft leather bee keeping gloves with a stretch cuff keep hands and arms protected while dealing with wasp and bee's nests.

PACK SIZE: 1 PAIR**SAFETY HAT**

PRODUCT CODES: SAFETYHAT (Yellow)

SAFETYHATWH (White)

SAFETYHATBL (Blue)

Protective safety hat conforming to industry standard EN397. Available in yellow, white or blue.

PACK SIZE: SINGLE



BUDGET COVERALL

PRODUCT CODES: COVALLBUGXL (XL)
 COVALLBUGXXL (XXL)

Strong, low cost disposable overalls to keep clothes protected from dirt and grime.

PACK SIZE: SINGLE



PRO SHIELD COVERALL

PRODUCT CODES: PROSHIELDM (MEDIUM)
 PROSHIELDL (LARGE)
 PROSHIELDXL (XL)

Pro Shield® 10 coveralls are made from a lightweight and durable fabric which has excellent breathability and comfort.

PACK SIZE: SINGLE



COVER SHOES

PRODUCT CODE: SHOE10

Protect your customers' carpets from dirt with these disposable overshoes.

PACK SIZE: 20



OVERBOOTS

PRODUCT CODE: OVERBOOT

These strong overboots protect against biting insects when entering and treating infested premises.

PACK SIZE: 5 PAIRS

EAR PLUGS

PRODUCT CODE: EARPLUGS

The E.A.R.[®] Classic is the most popular earplug in the world with a noise reduction rating (NRR) of 29dB. The moisture resistant, slow recovery PVC foam is dermatologically safe and provides comfort with low pressure. E.A.R Classic Ear Plugs expand to the shape of the ear canal in less than one minute and will gently seal the opening all day without discomfort. One size will fit most ears.

[PACK SIZE: 10 PAIRS](#)**EAR PROTECTORS**

PRODUCT CODE: EARDEF

Ear protectors offer the user excellent protection against high frequency noise.

[PACK SIZE: SINGLE](#)**SAFETY GLASSES EN166**

PRODUCT CODE: SAFETYGLASS

These robust, cost-effective safety glasses are ideal for protection when drilling, spraying or fogging.

[PACK SIZE: SINGLE](#)**SAFETY GOGGLES**

PRODUCT CODE: GOGGLES

These robust, cost-effective safety goggles are ideal for protection when drilling, spraying or fogging.

[PACK SIZE: 1](#)**VIZOR FACE SHIELD**

PRODUCT CODE: VIZOR

The Vizor face shield is perfect for use when spraying above head height. The shield comes complete with an adjustable head band to ensure the wearer's comfort at all times.

[PACK SIZE: SINGLE](#)

RESPIRATORY EQUIPMENT

It is important to wear the correct respiratory protection when working with hazardous substances.

Particle filters are graded into 3 classes:

Class	Protects against	Collecting efficiency
P1	Inert solid & wet particles	80%
P2	Harmful solid & wet particles	94%
P3	Toxic solid & wet particles	99.95%

Gases filters are graded into 3 classes:

Filter class	Gas and vapours capacity	Max. permissible contaminant concentration ¹⁾
1	Small	0.1 vol.-% (1000 ppm) ²⁾
2	Medium	0.5 vol.-% (5000 ppm) ²⁾
3	Large	1.0 vol.-% (10000 ppm) ²⁾

¹⁾ max. 50x limit value with half mask / max. 2000x limit value with full face mask (EN 529)

²⁾ Values taken from EN 14387

The gas filters are identified by a colour code for easy and unmistakable identification.



Colour code	Filter type	Contaminants present
Brown	A	Gases and vapours of organic compounds, boiling point \rightarrow 65°C
Dark brown	AX	Gases and vapours of organic compounds, boiling point \approx 65°C
Grey	B	Gases and vapours of inorganic compounds, e.g. chlorine, hydrogen sulphide, hydrogen cyanide
Yellow	E	Sulphur dioxide, hydrogen chloride
Green	K	Ammonia and organic ammonia derivatives
Black	CO	Carbon monoxide
Red	Hg	Mercury vapour
Blue	NO	Nitrous gases including nitrogen monoxide
Orange	Reactor	Radioactive iodine including radioactive iodomethane
White	P	Particle

In many applications particles, gases and vapours occur simultaneously.

In such cases combination filters are used. Combination filters consist of a gas filter with an upstream particle filter.

For both filter components the same filter classes apply as for the individual gas or particle filters.

Type & Colour Code	Application
A1	Organic gases & vapours (i.e. solvents)
A2	Long duration, for organic gases
A1 B1 E1	Organic, Inorganic, acid gases
A1 B2 E1 K1	Organic, inorganic, acid gases & ammonia
A1 P3	Organic gases, solid & liquid particles
A2 P3	Long duration, for organic gases, solid & liquid particles
A1 B1 E1 P3	Organic, inorganic & acid gases, solid & liquid particles
A1 B1 E1 K1 P3	Organic, inorganic & acid gases, solid & liquid particles

DRAGER SINGLE MASK

PRODUCT CODE: XPLORE9

The Drager Single Mask is a low maintenance mask. The flexfit head harness minimises hair entanglement and pressure points, while an X-guided strap system distributes weight evenly and allows for easy adjustment. With a flexible nose area, the Drager Single Mask will fit most face shapes.

The low profile bayonet connection gives you a wide range of vision and applications. Filter (shown in image) sold separately.

[PACK SIZE: SINGLE](#)

ACCESSORIES: XPLORE10 (Drager single mask filter, A2-P3, single pack)
XPLORE2 (A2-P3 Filter, two pack)

DRAGER HALF MASK 3300

PRODUCT CODE: XPLORE4

The Drager X-Plore 3300 is a low maintenance mask. The flexfit head harness minimises hair entanglement and pressure points, while an X-guided strap system distributes weight evenly and allows for easy adjustment. With a flexible nose area, the Drager X-Plore 3300 will fit most face shapes.

The low profile bayonet connection gives you a wide range of vision and applications with the explore bayonet filter series.

[PACK SIZE: SINGLE](#)

ACCESSORIES: XPLORE2 (A2-P3 Filter, two pack)
XPLORE6 (Drager mask filter, A1,B1,E1,K1,Hg-P3)

DRAGER FULL MASK 5500

PRODUCT CODE: XPLORE5

The Drager X-Plore 5500 dual-filter full face mask offers the wearer high level comfort and safety. The innovative low profile design was developed to ensure a clear field of vision to all sides. The double-layer face seal with triple sealing action ensures an excellent fit on all face shapes and sizes. With a wide range of possible filter combinations, the X-Plore 5500 keeps you protected during the most difficult of tasks.

[PACK SIZE: SINGLE](#)

ACCESSORIES: XPLORE2 (A2-P3 Filter, two pack)
XPLORE6 (Drager mask filter, A1,B1,E1,K1,Hg-P3)

DRAGER SINGLE MASK FILTER, A2-P3

PRODUCT CODES: XPLORE10 (SINGLE PACK)
XPLORE2 (2 PACK)

DRAGER MASK FILTER, A1,B1,E1,K1,HG-P3

PRODUCT CODE: XPLORE6

[PACK SIZE: 2](#)



3M RESPIRATOR

PRODUCT CODE: 3MRESP

The 3M respirator can provide protection against a range of organic vapours boiling above 65°C in concentrations of up to ten times the Occupational Exposure Limits (OEL) or 5,000ppm, whichever is lower. In addition, this respirator can protect against fine dust, with a mean particle size down to 0.5 micron, in concentrations up to 12 times the OEL. The 3M 4255 respirator meets the requirements of the HSE-approved standard EN405 FFA2P2.

PACK SIZE: SINGLE



DRAGER DISPOSABLE MASK

PRODUCT CODES: XPLORE3 (FFP2V, Pack of 5)

XPLORE7 (FFP1, Pack of 5)

XPLORE8 (FFP3V, Each)

Drager lightweight disposable masks are designed to protect against solid and liquid particles and nuisance-level odours. The patented Synsafe material with built-in prefilters along with a layer of activated carbon provides exceptional particle odour filtration and low breathing resistance. The Drager lightweight mask comes folded and individually packed for easy and hygienic transportation.

PACK SIZE: SINGLE



SX BEE KEEPING SUIT

PRODUCT CODES: SXBEESUITM (Medium)

SXBEESUITL (Large)

SXBEESUITXL (XL)

The SX Bee Keeping Suit is made from tough, clearview nylon with a built in, detachable hood and veil eliminating the need for a separate hat.

Please note hood type may vary.

PACK SIZE: SINGLE



SX BEE JACKET VEIL

PRODUCT CODES: SXBEEJACKM (Medium)

SXBEEJACKL (Large)

SXBEEJACKXL (XL)

The SX Bee Jacket Veil is made from tough, clearview nylon and provides the wearer with body and head protection.

Please note hood type may vary.

PACK SIZE: SINGLE



BEE KEEPING GLOVES

PRODUCT CODES: BEEGLOVES9 (Size 9)

BEEGLOVE10 (Size 10)

BEEGLOVE11 (Size 11)

BEEGLOVE12 (Size 12)

Washable, soft leather bee keeping gloves with a stretch cuff keep hands and arms protected while dealing with wasp and bee's nests.

PACK SIZE: 1 PAIR

B

B&G 2600 Fogger	51
B&G Bait Gun	39
Bags	56
Bait Box fixing peg	29
Bait Box Key	15
Bait Box Spike	29
Bait Button	39
BaitSafe	4-5
Bait Tray	10
Bait Tube	30
Bed Bug Barrier	41
Bed Bug Card Monitor	41
Bed Bug Inn	41
Bee Jacket Veil	66
Bee Suit	66
Beekeeping gloves	59,66
Black/White Checked Moth Pot	42
Bristle Stips	35
Buckets	53
Budget coverall	61
Budget Gel Bait Gun	39
Bug Tray	37

C

Cable ties	53
Carcus Disposal Bags	56
Carpet Beetle Lure	40
Cat Trap	48
Chemlock Pest Box	58
Clear Decanting Jar	53
Clothes moth lure	43
Clulite Classic	55
Contact Tunnel	13
Cockroach Lures	40
Covert Bait Stations	28
Coverall	61
Covershoes	61

D

Decanting Jar	53
Delta Moth Trap	42
Disposable gloves	59
Disposable mask	65
DR5 Dust Applicator	50
Drager Masks	64-65
Drive Rod	29
Drums	53
Dustmaster 3ltr	50
Dustick Kit	50

E

Ear plugs	62
Ear protectors	62
Eco-Catch Insect Trap	38
Eco Guard	22
Electronic Mouse Trap	9
Electronic Rat Trap	28
Elgeeco Squirrel Trap	48
Euro Anchor	29
Euro Mouse	7
Euro Rat box	17
Extension Lance	50
E-Z Baiter	26

F

Fat Cat Mouse Trap	12
Fix N Go	14,29
Filters	64
Flour beetle lure	40
Fluorescent tracking dust	15,30
Flyscreen kits	46
Fold flat pigeon trap	49
Fox / Dog trap	47
Foxaway trap	47

G**H**

Heavy duty black plastic bags	56
Holdall	57

I

Insect Guard	37
Insect Inn	38
Insect Pads	38

L

Larson trap	49
Leather Rigger Gloves	59
LED Pocket Light	55
Liquid Dispenser Unit	30
Litter Picker	56
Little Nipper Mouse Trap	10
Little Nipper Rat Trap	28
Loft-Mate Crawl Board	52
Long Handled Scraper	52
Lures	43

M

Magnifying pot	53
Mag Light	55
Mechanical Mouse Trap	12
Mesh Clips	34
Mesto Inox 6Ltr S/S Sprayer	51
Micro Mouse	6
Mini Mag-Lite	55
Monarch trap	47
Moth Pot Liners	42
Moth Traps	42-43
Mouse Traps	10
Mouse Bait Boxes	6-9
Mouse Box Bracket	14
Mouse Box Shoe	15
Mousestop	34
Multi-Catch Mouse trap	11
Multi guard	18

N

Nitrite Disposable Gloves	59
---------------------------	----

O

Overboots	61
-----------	----

P		SX Multi guard	18
Pest-Stop Mechanical Mouse Trap	12	SX Euro Mouse	7
Pigeon trap	49	SX Oda Blocks	32
Plastic shovel	52	SX Odour Treat	32
Probe Wipe	52	SX One Key	15, 31
Proofing plate	34	SX One Rat Box	16
Pro Shield coverall	61	SX Pigeon trap	49
PVC Dipped Rubber Gloves	59	SX Power Wipes	52
PVC Gauntlets	59	SX Probe Wipe	52
R		SX Rat Stopper	29
Rat Bait Boxes	16-27	SX Rhino	19
Rat Traps	28	SX Roachaway	40
Rat Stopper	29	SX Slide Feeding Tray	30
Respiratory Equipment	63-65	SX Slide guard	23
S		SX Squirrel Trap	48
Safety glasses	62	SX Sticky roll	45
Safety goggles	62	SX Strong Key	31
Safety hat	60	SX Stronghold	24
Seesnake Camera	54	SX Trap-e-box	8
Self tapping screw	35	SX Tunnel	21
Scoop	52	SX Universal Glueboards	33
Scraper	52	SX Vent	46
Slide guard	23	SX Wall Fixing Bracket	29
Slug tape	40	SX Wasp Domes	44
SL Video Inspection Camera	54	SX Weep hole protector	46
Small bird trap	49	SX Yellow Top Trap	44
Soudafoam	36	SX Snap-E-Mouse Trap	10
Sparrow trap	49	SX Snap-E Rat Trap	28
Specimen Collecting Jar	53	T	
Spectrum Lures	43	Touch n Tuff gloves	49
Spoon	52	Transit Box	58
Squirrel Trap	48	Trap-e-box	8
Stored product moth lures	43	Trap-in-a-box Mouse	9
Stronghold	24	Trap-in-a-box Rat	20
SX Bait Button	39	Trip-Trap	11
SX Bait Tray	10, 28	Tubs	53
SX Bee Jacket Veil	66	U	
SX Bee Suit	66	Ultima glue rat board	33
SX Black/White Clothes Moth Trap	42	Ultrabait VR	31
SX Box Key	15,31	Ultrabait Rat Key	31
SX bug Tray	37	Ultrabait Brackets	25
SX Cat Trap	48	UV-500 tracking torch	55
SX Contact Tunnel	13	UV LED Hand Torch	55
SX Detect it trap	38	V	
SX Eco Guard	22	Vizor face shield	62
SX Euro Rat box	17	W	
SX Fix N Go	14,29	Wall Fixing Bracket	29
SX Fly Ribbon Kit	45	Warehouse moth lure	43
SX Fly tubes	45	Wasp Domes	44
SX Fox / Dog trap	47	Weep hole protector	46
SX Foxaway trap	47	Wire Mesh	34
SX Gluebooks	33	Wire Wool	35
SX Glue Inn	33		
SX Insect Pads	38		
SX Insect Guard	37		
SX Insect Inn	38		
SX Larson trap	49		
SX Mesh Clips	34		
SX Micro Mouse	6		
SX Mouse Box Shoe	15		
SX Mouse Bracket	14		

INSECT-O-CUTOR® Insect-O-Cutor® is the world's leading flying insect control solutions provider, and has remained at the forefront of technical and design innovation since the brand was founded in 1962.

Offering a comprehensive range of flying insect control products, from electric killing grid flykillers to glueboard devices, flyscreens to decorative units, Insect-O-Cutor provides leading insect prevention and control for a wide range of applications. Recent leading product developments include the innovative Edge® glueboard flykiller, the Allure® killing grid unit and the stylish yet discreet Aura™ decorative unit.

Alongside innovative flykillers, Insect-O-Cutor also offers pest control professionals a wide range of branded consumables, including the leading Glupac® glueboard brand, and patented Synergetic® dual wavelength UV tubes.

NETWORK Network specialises in the provision of high quality bird control products for the professional pest control market, including leading brands Avipoint™ and Avishock™. With a leading reputation amongst professional pest controllers, Network is known for innovative time saving product solutions alongside expert technical guidance and specification support.

Network offers a comprehensive range of bird control products from the globally recognised Avipoint spike brand, through to high specification bird nets and installation time saving fixings and the leading electric bird proofing brand Avishock. Developed to offer absolute discretion, Avishock is extremely popular amongst architects and specifiers, as well as bird control specialists.

P+L Systems® Washroom P+L Systems Washroom is Europe's leading supplier of fragrances and dispensers with over 25 years experience in developing products for commercial washroom use.

P+L Systems Washroom understand that fragrance forms an integral part of the customer experience, and have developed a comprehensive range of products to suit a variety of applications. From fruity scents to light florals, rich coffee to fresh baby powder, P+L Systems Washroom has a range of fragrances to suit many areas, from the lobby to the washroom. The selection of fragrances are complimented by a wide choice of high quality, stylish fragrance dispensers offering programmable options to suit a broad range of environments.

In addition to the comprehensive range of fragrances and dispensers, P+L Systems Washroom also offers a wide range of washroom products designed for the European market, including urinal fragrancing and water management solutions, contemporary high specification hand dryers, hygienic feminine hygiene bins available in a range of sizes to suit servicing cycles, plus a range of automatic and manual soap dispensers.

SYNERGETIC® Bringing leading flying insect control to the North American market, Synergetic® offers innovative, patented product solutions alongside expert technical support.

Building on the heritage of the P+L Systems brand in the USA and Canada, Synergetic is proud to bring leading product flylights to these territories, alongside patented dual wavelength tubes and Glupac® glueboards.

Covering a wide range of applications, the Synergetic brand offers flylights for front-of-house areas, food manufacturing, storage areas and backrooms and commercial food preparation areas.



Pest-Stop is the UK's leading manufacturer and supplier of high quality pest control products for the retail market.

The Pest-Stop brand offers a comprehensive range of market-leading products, from the traditional Little Nipper mouse traps, one of the longest standing pest control brand names, to contemporary products designed with the domestic user in mind.



**For advice on product selection or technical support,
call our team on +44 (0) 800 988 5359 or email info@pandlsystems.com**

T +44 (0) 800 988 5359

F +44 (0) 1423 863 497

W www.pestcontrolonline.com

P+L Systems®

For more information on the P+L Systems Group please visit www.pandlsystems.com

DISTRIBUTED BY: